



COURSE BOOK

25th Western Circuit Sailing Regatta

brought to you by:



Table of Contents

| | |
|-------------------------------------|----|
| Regatta Committee | 3 |
| Tide table | 5 |
| Course Flags | 6 |
| Class Flags & Starting Sequence | 7 |
| Courses: | |
| IRC A & B, PY, Multihull | |
| <i>Short Courses</i> | |
| Course 1 & 2 | 9 |
| <i>Long Courses</i> | |
| Course 3 - 6 | 11 |
| Course 7 | 13 |
| Course 8 | 14 |
| SMU Sailing Club | 15 |
| Raffles Marina | 16 |
| Sponsors | 17 |

Regatta Committee

Regatta Advisors

Siaw Chee Huat, Raffles Marina
Evon Wong, SMU

Principal Race Officer (PRO)

Jonathan Kwek (International Race Officer)

Course Race Officer (CRO)

Hansa 2.3 - Jovin Tan (National Race Officer)

Regatta Safety Officer

Ong Shean Boon, Raffles Marina

Regatta Coverage

Li Ming Hui, Raffles Marina
Luc Yee, SMU

Regatta Photographer

Zetty, Raffles Marina
Howie Choo

Regatta Committee

Organising Committee

Chairperson: Chin Shuen Lin

Co-Chairperson: Declan Saw

SMU Sailing Club

Race Director: Brandon Chia

Programmes Director: Jiang Qianchen

Manpower Director: Ng Kai Teng

Marketing Director: Luc Yee

Logistics Director: Nicole Thea Lim

Sponsorship Director: Nandini Kapoor

Tide Table

AUGUST 2024

HOURLY TIDAL HEIGHTS

HEIGHTS IN METRES

WEST TUAS

LAT 01° 20.7'N LONG 103° 38.0'E

| DAY\HR | 00 | 01 | 02 | 03 | 04 | 05 | 06 | 07 | 08 | 09 | 10 | 11 | 12 | 13 | 14 | 15 | 16 | 17 | 18 | 19 | 20 | 21 | 22 | 23 |
|--------|-----|-----|-----|-----|-----|-----|-----|-----|-----|-----|-----|-----|-----|-----|-----|-----|-----|-----|-----|-----|-----|-----|-----|-----|
| 1 | 1.6 | 1.3 | 1.0 | 0.9 | 0.8 | 0.8 | 1.1 | 1.4 | 1.7 | 1.9 | 2.0 | 1.9 | 1.7 | 1.5 | 1.4 | 1.3 | 1.4 | 1.6 | 2.0 | 2.4 | 2.8 | 2.9 | 2.8 | 2.5 |
| 2 | 2.1 | 1.7 | 1.3 | 1.0 | 0.8 | 0.6 | 0.6 | 0.9 | 1.4 | 1.8 | 2.0 | 2.1 | 2.1 | 1.8 | 1.5 | 1.3 | 1.2 | 1.3 | 1.5 | 1.9 | 2.5 | 2.9 | 3.1 | 3.0 |
| 3 | 2.7 | 2.2 | 1.6 | 1.2 | 0.9 | 0.7 | 0.5 | 0.5 | 1.0 | 1.5 | 2.0 | 2.2 | 2.3 | 2.1 | 1.7 | 1.3 | 1.1 | 1.1 | 1.2 | 1.4 | 2.0 | 2.7 | 3.1 | 3.2 |
| 4 | 3.0 | 2.6 | 2.1 | 1.5 | 1.1 | 0.8 | 0.6 | 0.4 | 0.6 | 1.2 | 1.8 | 2.2 | 2.3 | 2.3 | 2.0 | 1.5 | 1.1 | 1.0 | 1.0 | 1.1 | 1.5 | 2.2 | 2.9 | 3.3 |
| 5 | 3.3 | 3.0 | 2.5 | 1.9 | 1.3 | 1.0 | 0.7 | 0.5 | 0.5 | 0.9 | 1.6 | 2.2 | 2.4 | 2.4 | 2.2 | 1.7 | 1.2 | 0.9 | 0.9 | 1.0 | 1.1 | 1.7 | 2.5 | 3.2 |
| 6 | 3.4 | 3.2 | 2.8 | 2.2 | 1.6 | 1.1 | 0.8 | 0.6 | 0.5 | 0.7 | 1.3 | 2.0 | 2.4 | 2.5 | 2.4 | 2.0 | 1.5 | 1.0 | 0.8 | 0.8 | 1.0 | 1.3 | 2.0 | 2.9 |
| 7 | 3.3 | 3.3 | 3.0 | 2.5 | 1.9 | 1.3 | 0.9 | 0.7 | 0.5 | 0.6 | 1.1 | 1.9 | 2.4 | 2.6 | 2.5 | 2.2 | 1.8 | 1.2 | 0.8 | 0.7 | 0.8 | 1.0 | 1.6 | 2.4 |
| 8 | 3.1 | 3.3 | 3.1 | 2.7 | 2.1 | 1.5 | 1.0 | 0.7 | 0.5 | 0.5 | 0.9 | 1.6 | 2.3 | 2.7 | 2.7 | 2.5 | 2.0 | 1.5 | 1.0 | 0.7 | 0.7 | 0.8 | 1.2 | 2.0 |
| 9 | 2.7 | 3.1 | 3.1 | 2.9 | 2.4 | 1.7 | 1.2 | 0.8 | 0.6 | 0.5 | 0.7 | 1.4 | 2.1 | 2.6 | 2.8 | 2.6 | 2.3 | 1.8 | 1.2 | 0.9 | 0.7 | 0.7 | 1.0 | 1.5 |
| 10 | 2.3 | 2.8 | 3.0 | 2.8 | 2.5 | 1.9 | 1.3 | 0.9 | 0.7 | 0.6 | 0.7 | 1.1 | 1.9 | 2.5 | 2.8 | 2.7 | 2.5 | 2.1 | 1.5 | 1.1 | 0.8 | 0.8 | 0.8 | 1.2 |
| 11 | 1.8 | 2.4 | 2.7 | 2.7 | 2.5 | 2.1 | 1.5 | 1.1 | 0.8 | 0.7 | 0.8 | 1.0 | 1.6 | 2.3 | 2.7 | 2.8 | 2.6 | 2.3 | 1.9 | 1.4 | 1.1 | 0.9 | 0.9 | 1.0 |
| 12 | 1.4 | 1.9 | 2.3 | 2.4 | 2.3 | 2.1 | 1.7 | 1.3 | 1.0 | 0.9 | 0.9 | 1.0 | 1.4 | 2.0 | 2.5 | 2.7 | 2.7 | 2.5 | 2.2 | 1.7 | 1.4 | 1.1 | 1.0 | 1.0 |
| 13 | 1.2 | 1.5 | 1.9 | 2.1 | 2.1 | 2.0 | 1.7 | 1.4 | 1.2 | 1.0 | 1.0 | 1.1 | 1.3 | 1.7 | 2.1 | 2.5 | 2.6 | 2.6 | 2.4 | 2.1 | 1.7 | 1.5 | 1.3 | 1.2 |
| 14 | 1.2 | 1.3 | 1.5 | 1.7 | 1.8 | 1.8 | 1.7 | 1.5 | 1.4 | 1.2 | 1.2 | 1.2 | 1.3 | 1.5 | 1.8 | 2.1 | 2.4 | 2.5 | 2.5 | 2.4 | 2.2 | 1.9 | 1.7 | 1.5 |
| 15 | 1.3 | 1.2 | 1.2 | 1.3 | 1.4 | 1.5 | 1.5 | 1.6 | 1.6 | 1.5 | 1.5 | 1.4 | 1.4 | 1.4 | 1.5 | 1.7 | 2.0 | 2.2 | 2.5 | 2.6 | 2.5 | 2.4 | 2.2 | 1.9 |
| 16 | 1.6 | 1.3 | 1.2 | 1.0 | 1.0 | 1.1 | 1.3 | 1.5 | 1.6 | 1.7 | 1.8 | 1.7 | 1.5 | 1.4 | 1.3 | 1.4 | 1.5 | 1.8 | 2.2 | 2.5 | 2.7 | 2.8 | 2.7 | 2.4 |
| 17 | 2.0 | 1.6 | 1.2 | 1.0 | 0.8 | 0.7 | 0.9 | 1.2 | 1.5 | 1.8 | 2.0 | 2.0 | 1.8 | 1.5 | 1.3 | 1.2 | 1.2 | 1.3 | 1.7 | 2.2 | 2.7 | 3.1 | 3.1 | 2.9 |
| 18 | 2.5 | 2.0 | 1.4 | 1.1 | 0.8 | 0.6 | 0.6 | 0.8 | 1.3 | 1.8 | 2.2 | 2.3 | 2.2 | 1.9 | 1.4 | 1.1 | 1.0 | 1.0 | 1.2 | 1.7 | 2.3 | 3.0 | 3.4 | 3.4 |
| 19 | 3.0 | 2.5 | 1.8 | 1.2 | 0.9 | 0.6 | 0.4 | 0.5 | 0.9 | 1.6 | 2.2 | 2.4 | 2.4 | 2.2 | 1.8 | 1.2 | 0.9 | 0.8 | 0.9 | 1.1 | 1.7 | 2.6 | 3.4 | 3.6 |
| 20 | 3.5 | 3.0 | 2.4 | 1.6 | 1.0 | 0.7 | 0.5 | 0.3 | 0.5 | 1.2 | 2.0 | 2.5 | 2.6 | 2.6 | 2.2 | 1.6 | 1.0 | 0.7 | 0.6 | 0.7 | 1.1 | 1.9 | 2.9 | 3.6 |
| 21 | 3.8 | 3.5 | 2.9 | 2.1 | 1.4 | 0.9 | 0.5 | 0.4 | 0.3 | 0.7 | 1.6 | 2.4 | 2.8 | 2.8 | 2.6 | 2.1 | 1.4 | 0.9 | 0.5 | 0.5 | 0.6 | 1.2 | 2.1 | 3.2 |
| 22 | 3.7 | 3.7 | 3.4 | 2.7 | 1.9 | 1.2 | 0.7 | 0.4 | 0.3 | 0.4 | 1.1 | 2.1 | 2.8 | 2.9 | 2.9 | 2.5 | 1.9 | 1.2 | 0.7 | 0.4 | 0.4 | 0.6 | 1.3 | 2.4 |
| 23 | 3.3 | 3.6 | 3.6 | 3.1 | 2.4 | 1.6 | 1.0 | 0.6 | 0.4 | 0.4 | 0.8 | 1.7 | 2.5 | 3.0 | 3.0 | 2.9 | 2.4 | 1.7 | 1.1 | 0.6 | 0.4 | 0.3 | 0.7 | 1.6 |
| 24 | 2.6 | 3.2 | 3.4 | 3.3 | 2.8 | 2.1 | 1.4 | 0.9 | 0.6 | 0.5 | 0.6 | 1.3 | 2.2 | 2.9 | 3.1 | 3.0 | 2.7 | 2.2 | 1.5 | 0.9 | 0.6 | 0.4 | 0.4 | 0.9 |
| 25 | 1.8 | 2.5 | 3.0 | 3.1 | 2.9 | 2.4 | 1.7 | 1.2 | 0.9 | 0.7 | 0.7 | 1.1 | 1.8 | 2.6 | 3.0 | 3.1 | 2.9 | 2.5 | 1.9 | 1.3 | 0.9 | 0.6 | 0.5 | 0.6 |
| 26 | 1.1 | 1.8 | 2.3 | 2.6 | 2.6 | 2.4 | 2.0 | 1.5 | 1.2 | 1.0 | 0.9 | 1.1 | 1.5 | 2.2 | 2.7 | 3.0 | 3.0 | 2.8 | 2.3 | 1.8 | 1.3 | 1.0 | 0.8 | 0.7 |
| 27 | 0.9 | 1.3 | 1.7 | 2.0 | 2.2 | 2.2 | 2.0 | 1.7 | 1.4 | 1.2 | 1.2 | 1.2 | 1.4 | 1.8 | 2.3 | 2.7 | 2.8 | 2.8 | 2.6 | 2.2 | 1.8 | 1.5 | 1.2 | 1.0 |
| 28 | 1.0 | 1.0 | 1.2 | 1.4 | 1.6 | 1.7 | 1.8 | 1.8 | 1.7 | 1.5 | 1.4 | 1.4 | 1.5 | 1.7 | 1.9 | 2.2 | 2.4 | 2.6 | 2.6 | 2.5 | 2.3 | 2.0 | 1.7 | 1.5 |
| 29 | 1.3 | 1.1 | 1.0 | 1.0 | 1.1 | 1.2 | 1.4 | 1.6 | 1.7 | 1.8 | 1.7 | 1.7 | 1.6 | 1.6 | 1.7 | 1.8 | 1.9 | 2.2 | 2.4 | 2.5 | 2.6 | 2.5 | 2.3 | 2.0 |
| 30 | 1.7 | 1.4 | 1.1 | 0.9 | 0.8 | 0.8 | 1.0 | 1.3 | 1.6 | 1.9 | 2.0 | 1.9 | 1.8 | 1.6 | 1.5 | 1.5 | 1.5 | 1.6 | 1.9 | 2.3 | 2.6 | 2.8 | 2.8 | 2.5 |
| 31 | 2.2 | 1.7 | 1.4 | 1.0 | 0.8 | 0.6 | 0.6 | 0.9 | 1.4 | 1.9 | 2.1 | 2.2 | 2.1 | 1.8 | 1.5 | 1.3 | 1.3 | 1.3 | 1.4 | 1.8 | 2.4 | 2.9 | 3.0 | 3.0 |

Course Flags

COURSE

FLAG

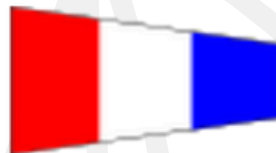
1



2



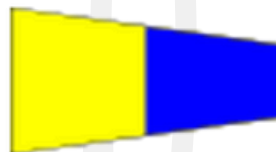
3



4



5



6



7



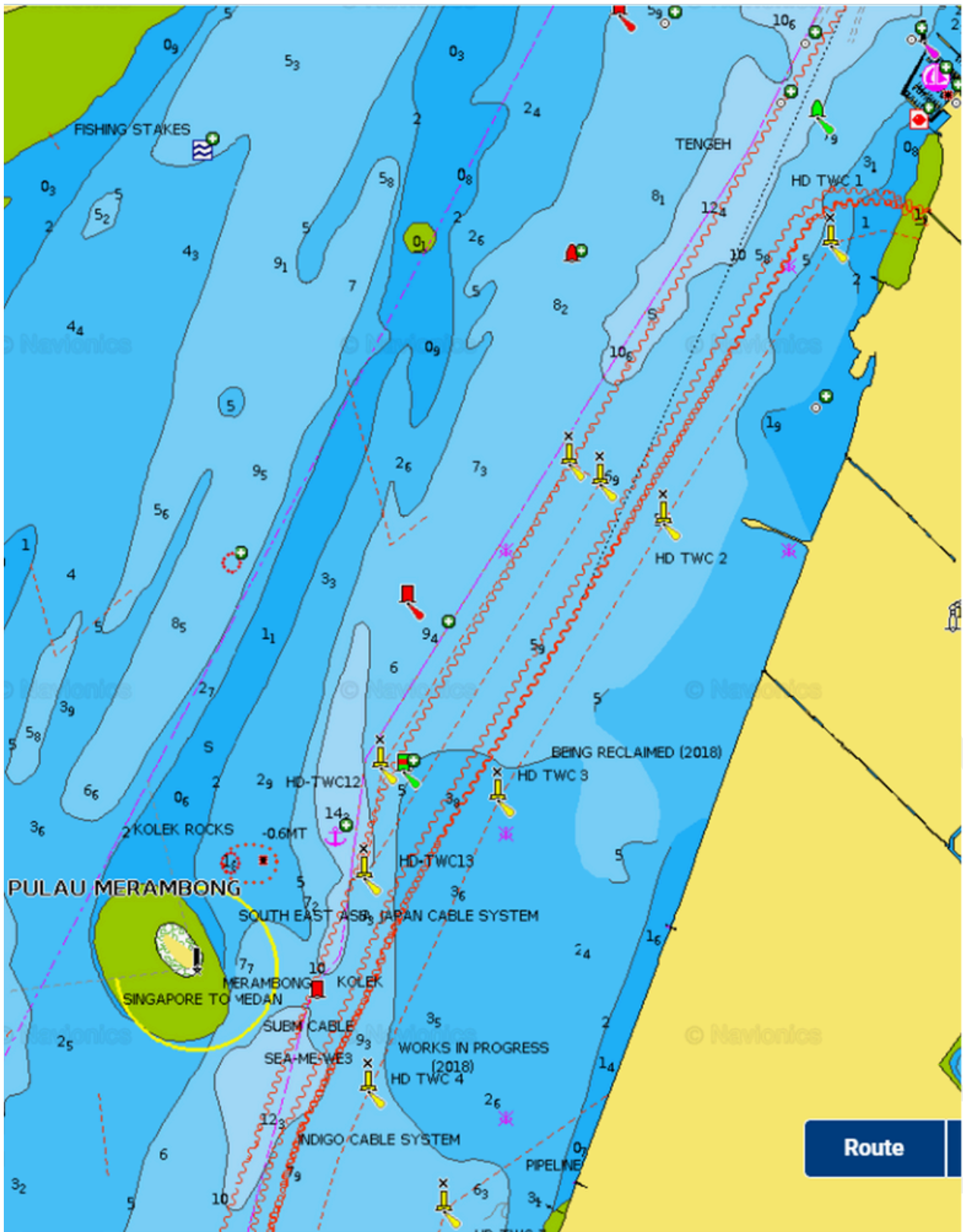
8



Course Flags - Keelboats

| Class | Flag |
|-------------------------|---|
| IRC A ('E' Flag) |  |
| PY ('G' Flag) |  |
| SB20 |  |
| J/24 ('J' Flag) |  |
| Trimaran ('K' Flag) |  |

All Classes - Course 1-2



All Classes - Course 1-2

| Course | Route | Time Limit (Minutes) |
|--------|---|----------------------|
| 1 | Start – M1 – M2 – M1 – Finish | 90 |
| 2 | Start – M1 – M2 – M1 – M2 – M1 – Finish | 90 |

Remarks:

Round all marks to Port unless otherwise stated

Time Limit:

Boats failing to finish within the time limit or 30mins after the third boat of that class sails the course and finishes, whichever is longer will be scored “Did Not Finish”. This changes rules 35 and A4.

Start

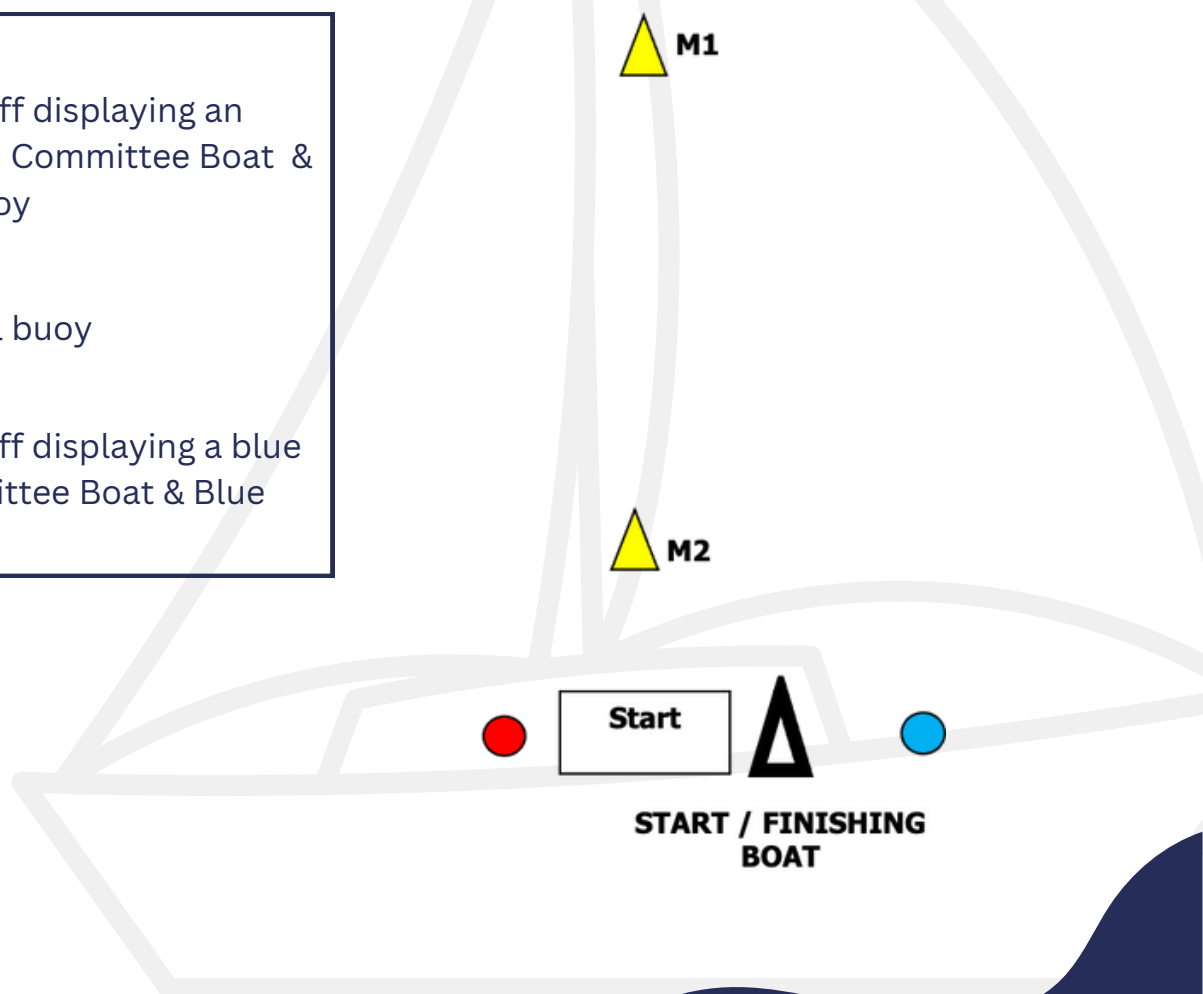
Between a staff displaying an orange flag on Committee Boat & Red round buoy

M1 & M2

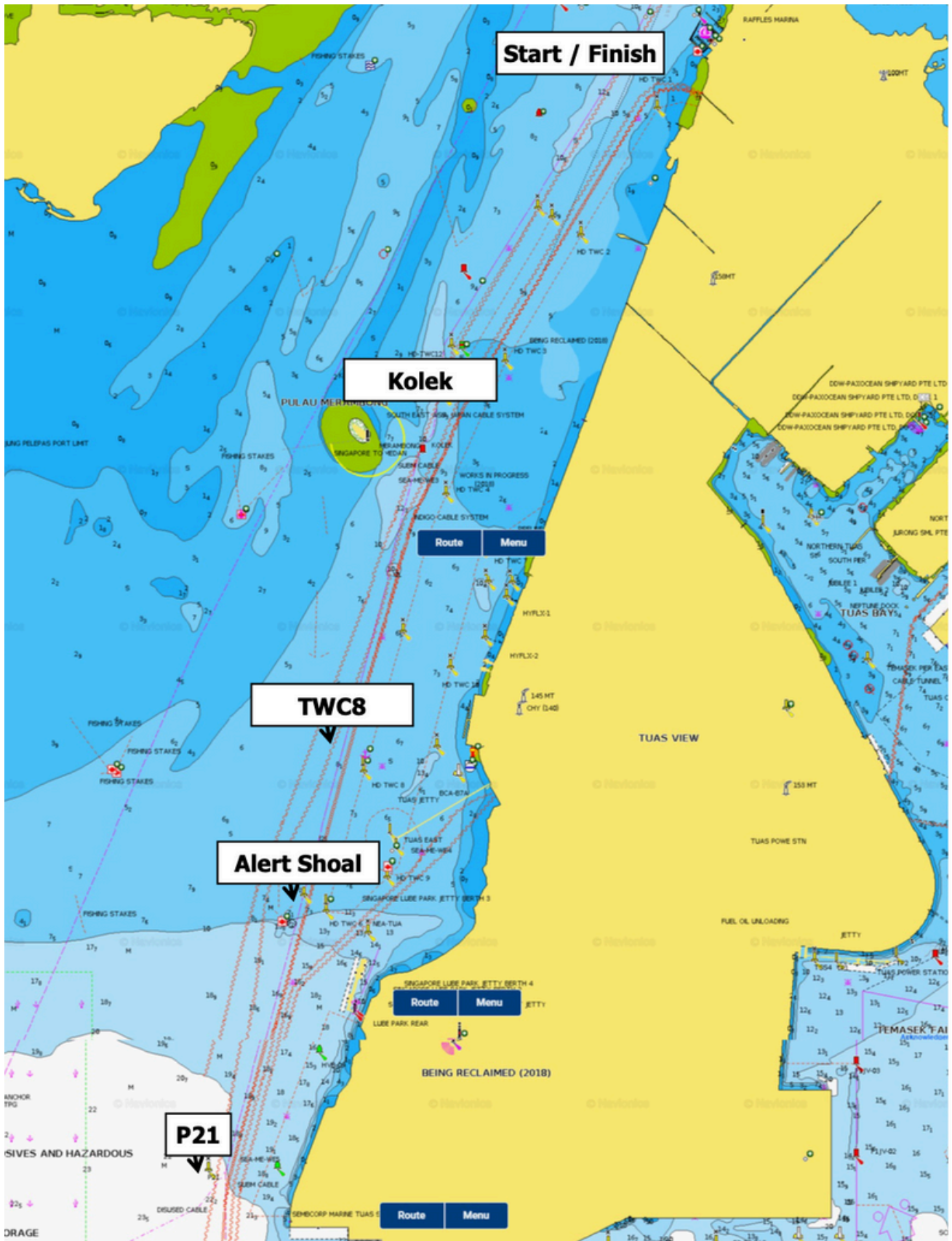
Yellow conical buoy

Finish

Between a staff displaying a blue flag on Committee Boat & Blue buoy



IRC, PY, Multihull - Course 3-6



IRC, PY, Multihull - Course 3-6

| Course | Route | Time Limit (Minutes) |
|--------|--|----------------------|
| 3 | Start - M1 - Kolek - Finish 3.5nM (40mins) | 90 |
| 4 | Start - Kolek - M2 - Kolek - Finish 7nM (120mins) | 180 |
| 5 | Start - Kolek - TWC8 - Kolek - Finish 6.2nM (75mins) | 120 |
| 6 | Start - M1 - P21 - Finish 10nM (120mins) | 240 |

Remarks:

Round all marks to Port unless otherwise stated.

Time Limit:

Boats failing to finish within the time limit or 30mins after the third boat of that class sails the course and finishes, whichever is longer will be scored "Did Not Finish". This changes rules 35 and A4.

Start

Between a staff displaying an orange flag on Committee Boat & Red round buoy

P21 Lat 1°15.85' N Long 103°36.00' E

Alert Shoal Lat 1°16.987'N Long 103°36.374' E

TWC8 Lat 1°17.494' N Long 103°36.642' E

Yellow Navigational Buoy

Kolek

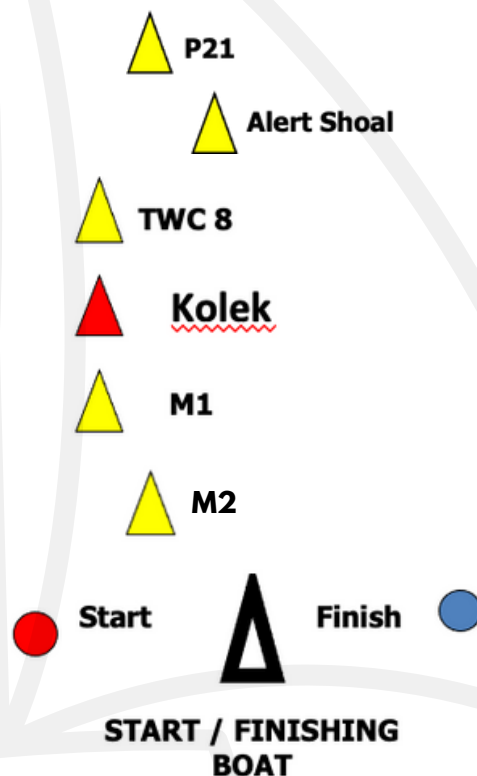
Red Navigational Buoy
Lat 1°18'852 N
Long 103°36.877' E

M1

Yellow conical buoy

Finish

Between a staff displaying a blue flag on Committee Boat & Blue round buoy



IRC, PY, Multihull - Course 7

| Course | Route | | | Time Limit (Minutes) |
|--------|------------------|--|------------------------------------|----------------------|
| 7 | Start | Between a staff displaying an orange flag on Committee Boat and Red round buoy | | 300 |
| | Alert Shoal buoy | Pass to Starboard | Lat 1°16.987' N Long 103°36.374' E | |
| | P21 buoy (Gate) | Mark Boat (S) and P21 Buoy (P) | Lat 1°15.85' N Long 103°36.00' E | |
| | TVE 5 buoy | Round to Port | Lat 1°13.08' N Long 103°36.29' E | |
| | P21 buoy (Gate) | Mark Boat (P) and P21 Buoy (S) | Lat 1°15.85' N Long 103°36.00' E | |
| | Alert Shoal buoy | Pass to Port | Lat 1°16.987' N Long 103°36.374' E | |
| | Finish | Between a staff playing a blue flag on Committee Boat and Blue round buoy. | | Approx. 16 NM |

Remarks:

Round all marks to Port unless otherwise stated.

Time limit:

Boats failing to finish within the time limit or 30mins after the third boat of that class sails the course and finishes, whichever is longer will be scored "Did Not Finish". This changes rules 35 and A4.

If less than 30% (rounded up to the nearest whole number) of a class reach the Finish line (or shorten course finish) within the time limit, then the race committee may take all places for that class from the previous mark.

IRC, PY, Multihull - Course 8

| Course | Route | | Time Limit (Minutes) |
|--------|-------------------|---|------------------------------------|
| 8 | Start | Between a staff displaying an orange flag on Committee Boat with Raffles Marina Flag and Pink round buoy | |
| | Alert Shoal buoy | Pass to Starboard | Lat 1°16.987' N Long 103°36.374' E |
| | P21 buoy (Gate) | Mark Boat (S) and P21 Buoy (P) | Lat 1°15.85' N Long 103°36.00' E |
| | TVE 5 buoy (Gate) | Mark Boat (S) and TVE 5 (P) | Lat 1°13.08' N Long 103°36.29' E |
| | TVE 2 buoy | Round to Port | Lat 1°12.58' N Long 103°38.21' E |
| | TVE 5 buoy (Gate) | Mark Boat (P) and TVE 5 (S) | Lat 1°13.08' N Long 103°36.29' E |
| | P21 buoy (Gate) | Mark Boat (P) and P21 Buoy (S) | Lat 1°15.85' N Long 103°36.00' E |
| | Alert Shoal buoy | Pass to Port | Lat 1°16.987' N Long 103°36.374' E |
| | Finish | Between a staff displaying a blue flag on Committee Boat and Blue round buoy. | Approx. 20 NM |

Remarks:

Round all marks to Port unless otherwise stated.

Time limit:

Boats failing to finish within the time limit or 30mins after the third boat of that class sails the course and finishes, whichever is longer will be scored "Did Not Finish". This changes rules 35 and A4.

If less than 30% (rounded up to the nearest whole number) of a class reach the Finish line (or shorten course finish) within the time limit, then the race committee may take all places for that class from the previous mark.

SMU Sailing



The SMU Sailing Club was founded in 2004 by a group of friends who enjoyed nothing more than to be out on the water together. Years later, the club has grown to accommodate an expanded fleet of boats and membership but our sailors have always kept our underlying principles of friendship, teamwork and passion while creating waves in the sailing community globally.

With the invaluable support of Singapore Management University's (SMU) Office of Student Life, SMU Sailing has gone where no other university sports club has gone before. Over the years we have made many friends of sailing and have impressed sailors from all over the world with our enthusiasm, passion and eagerness to learn from the sport.

Being a university sports club, SMU Sailing is focused on the development of leadership qualities in our sailors through the numerous opportunities to organize, plan and run events. We aim to enhance the critical skills that sailors learn on the water so that they can apply them in the corporate world.

The SMU Sailing club continues to grow from strength to strength as we recruit both experienced and non experienced sailors from the SMU community annually. The club competes regularly in many local regattas as well as regattas held in Thailand, Malaysia and Indonesia. In addition, the team also travels to China and Europe for major regattas.

Above all, the SMU Sailing club is more than just a sports team. We are a family. Visit us at <http://smusailing.com/>.

Raffles Marina



Think of that nautical lifestyle, of marine leisure sports, and you automatically think of Raffles Marina, with its world-class hardware, its superlative facilities and supremely professional managers. Raffles Marina is a first class, full service boating haven with the trappings of a prestigious country club and all pleasures of a quality resort.

Megayacht berthing is available; in fact, Raffles Marina is the only marina facility in Asia that caters specifically to the exacting needs of the megayacht community. Protected by a solid breakwater, the minimum depth alongside is 10 metres while the approach channel has a minimum depth of 5 metres at low tide. This enables yachts to berth with us at all times. Shore power services, freshwater supply, TV antennae connectors and telecommunication access are also available.

Our walk-on berths can accommodate boats of up to 65 feet while the Boathouse has 208 dry-berths for boats of up to 35 feet. In addition, when you berth with us, you will also enjoy our clubhouse facilities. There are gymnasium, guestrooms, restaurants and a pub – just to name a few. Make Raffles Marina your gateway to a new adventure today and everyday.

Visit us at <https://www.rafflesmarina.com.sg/> and follow us on Facebook: Raffles Marina and Instagram @rafflesmarina.



Organised by:



RAFFLES
MARINA



Sponsored by:



FUNAN · SINGAPORE



JK Technology
Your Preferred IT Partner



Bioré UV



oatbedient®



Kee's

clearvision
EYE CLINIC & LASIK CENTRE
SEE CLEARLY, SAFELY

